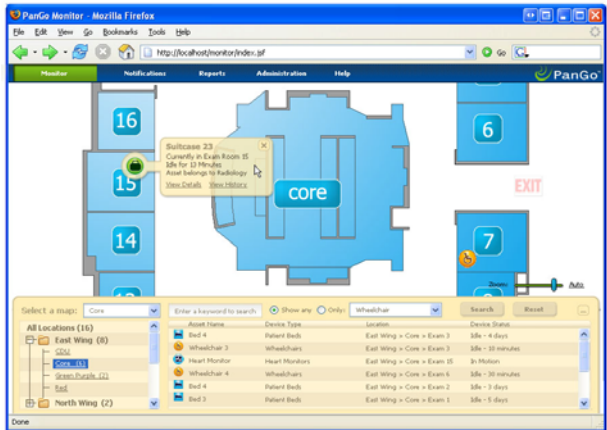


Cisco Systems & PanGo Networks Joint Asset Tracking Solution

***PanGo Locator**® provides real-time asset visibility through a turnkey WLAN-based system for tracking mobile assets*



Monitor – visualize, search and filter assets in floor plan or table views

Notify – automatically send notifications and alerts based on user-defined asset location/status rules

Report – current or historical asset reports, including location, duration, and movement

Markets:

- Healthcare
- Manufacturing
- Distribution

Customers:

- Denver Health
- Tallahassee Memorial
- Beth Israel Deaconess
- Lifespan
- Toho Tenax